



Three Interconnected Trail Systems
300+ Miles of Trail
9 - Community Connectors
1-800-592-2217



Pinnacle Creek Community Connectors
 Town of Kimball
 City of Mullens
 Town of Pineville
 City of Welch

Indian Ridge Community Connectors
 Town of Keystone
 Town of Northfork

Pocahontas Community Connectors
 Town of Bramwell
 Town of Matoaka
 Montcalm

Trail Rules

USER PERMITS are required for all operators and passengers. Everyone must wear a DOT, SNELL or other approved helmet and eye protection.

No child under the age of 6 (six) years allowed on any trail. **ABSOLUTELY NO BOOSTER SEATS OR CAR SEATS ALLOWED.** If your child is required by state law to use a booster seat or car seat in a vehicle then your child cannot ride as a passenger on the trails.

All operators and passengers on an ATV, UTV or off-road motorcycle must follow manufacturers' recommendations.

ABSOLUTELY NO ALCOHOLIC beverages may be consumed or carried.

Trails are only open during daylight hours. Obey all posted traffic signs, no glass containers, no fires. Stay on marked trails.

Never go off trail. No competitions.

All persons under the age of 16 must remain within sight of their parent or guardian at all times. Violation of any rule is subject to a misdemeanor.

Community Connector Etiquette

Remember – People Live In These Communities

Riding in Town is not a right, it is a privilege

Slow down when entering a community

Watch for Children playing

Keep engines as quiet as possible

Try not to kick up dust

Be courteous

HMT APP

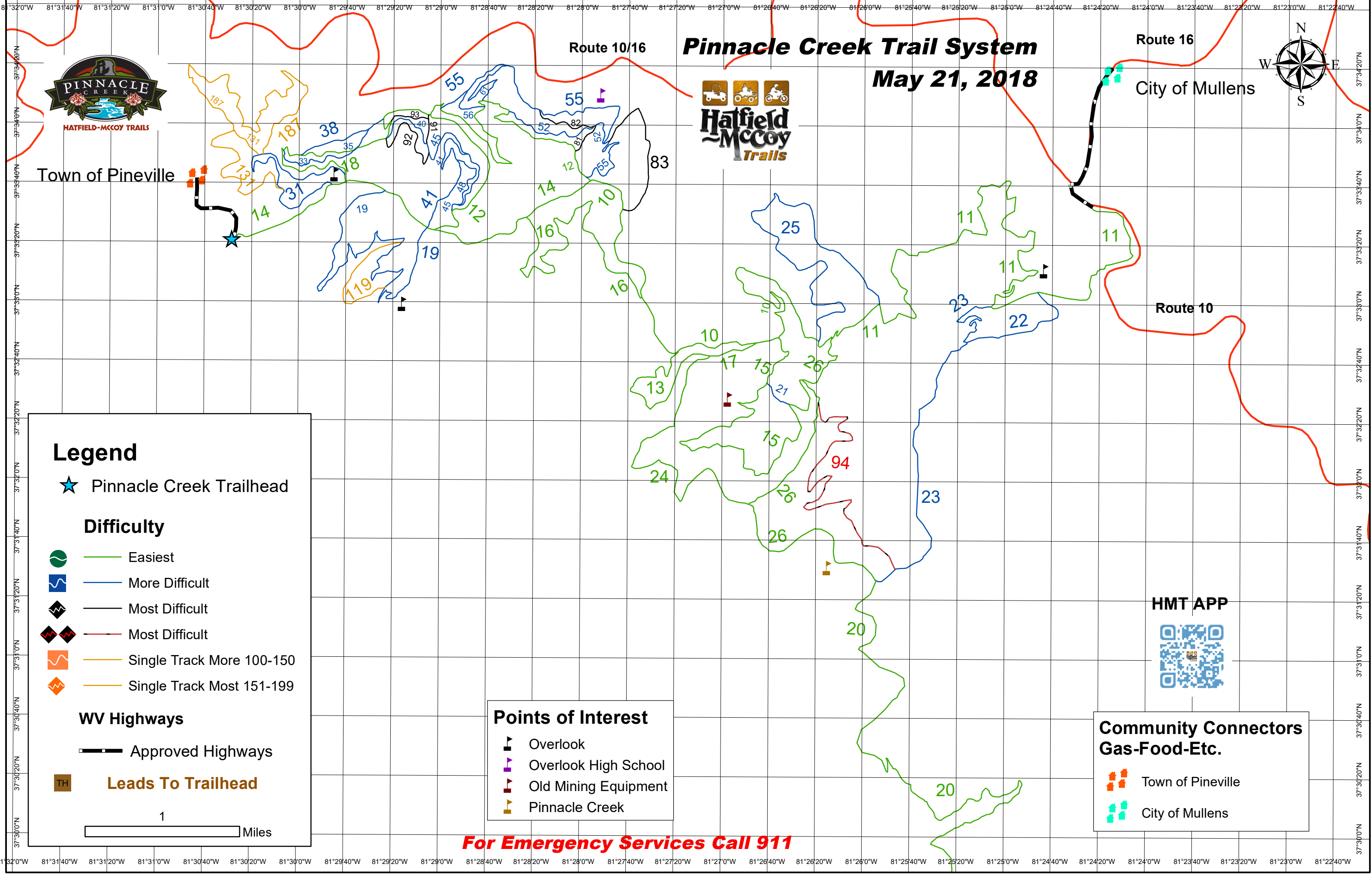
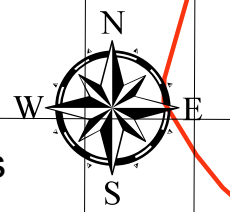


For Emergency Services Call 911



Pinnacle Creek Trail System

May 21, 2018



Legend

- ★ Pinnacle Creek Trailhead

Difficulty

- Easiest
- More Difficult
- Most Difficult
- Most Difficult
- Single Track More 100-150
- Single Track Most 151-199

WV Highways

- Approved Highways

Leads To Trailhead

- Leads To Trailhead

1 Miles

Points of Interest

- Overlook
- Overlook High School
- Old Mining Equipment
- Pinnacle Creek



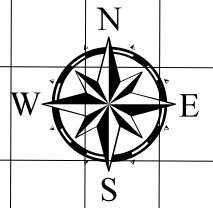
Community Connectors Gas-Food-Etc.

- Town of Pineville
- City of Mullens

For Emergency Services Call 911

Pinnacle Creek/Indian Ridge Connector

June, 2018



Legend

Difficulty

- Easiest
- More Difficult
- Most Difficult
- Most Difficult
- Single Track More 100-150
- Single Track Most 151-199

WV Highways

- Approved Highways
- Leads To Trailhead

1 Miles

HMT APP

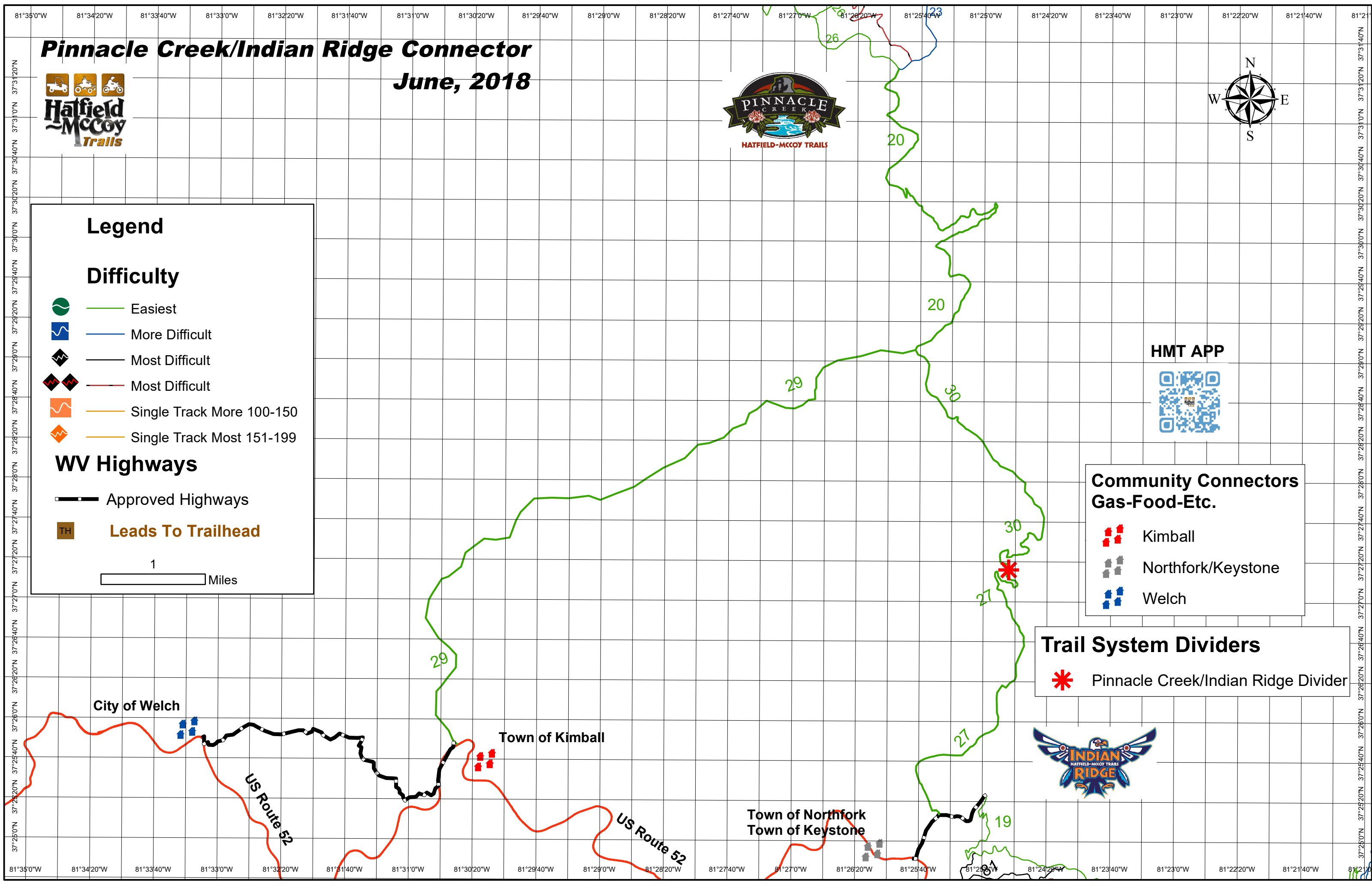


Community Connectors Gas-Food-Etc.

- Kimball
- Northfork/Keystone
- Welch

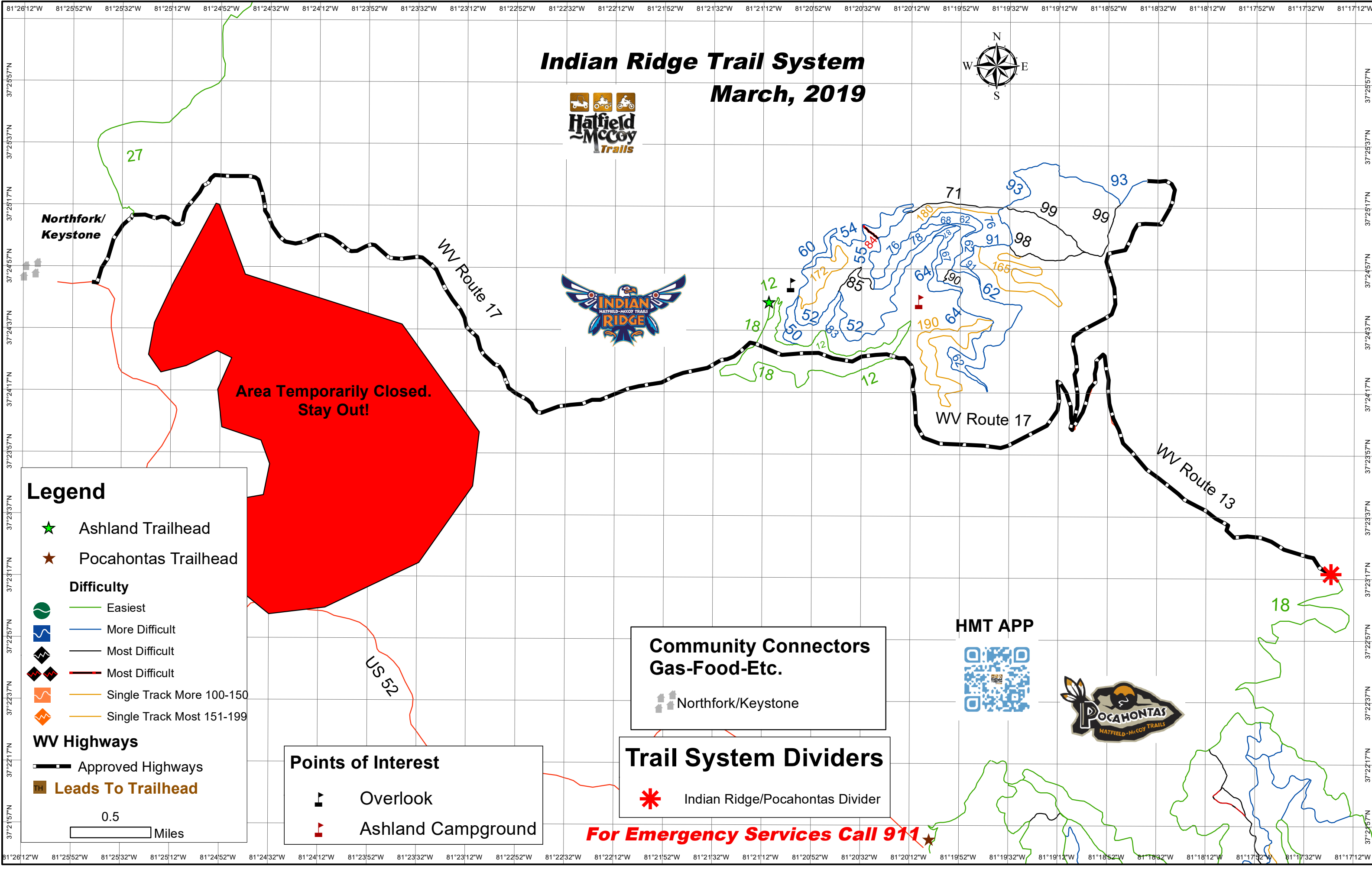
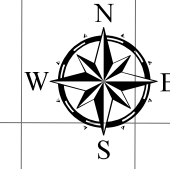
Trail System Dividers

- Pinnacle Creek/Indian Ridge Divider



Indian Ridge Trail System

March, 2019



Legend

- ★ Ashland Trailhead
- ★ Pocahontas Trailhead

Difficulty

- Easiest
- More Difficult
- Most Difficult
- Most Difficult
- Single Track More 100-150
- Single Track Most 151-199

WV Highways

- Approved Highways
- Leads To Trailhead

0.5
Miles

Points of Interest

- Overlook
- Ashland Campground

Community Connectors
Gas-Food-Etc.

Northfork/Keystone

Trail System Dividers

- Indian Ridge/Pocahontas Divider

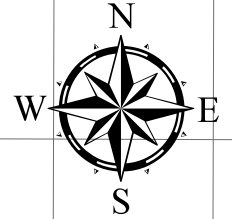
HMT APP



For Emergency Services Call 911

Pocahontas Trail System

March, 2019



Route 13/1

Route 13

**Danger
Active Mine Site
Stay Out**

Points of Interest

- Pond
- Overlook

HMT APP



To Matoaka
8.5 Miles ---->

Montcalm

Town of Bramwell

Legend

- Pocahontas Trailhead

Difficulty

- Easiest
- More Difficult
- Most Difficult
- Most Difficult
- Single Track More 100-150
- Single Track Most 151-199

WV Highways

- Approved Highways
- Leads To Trailhead

0.5 Miles

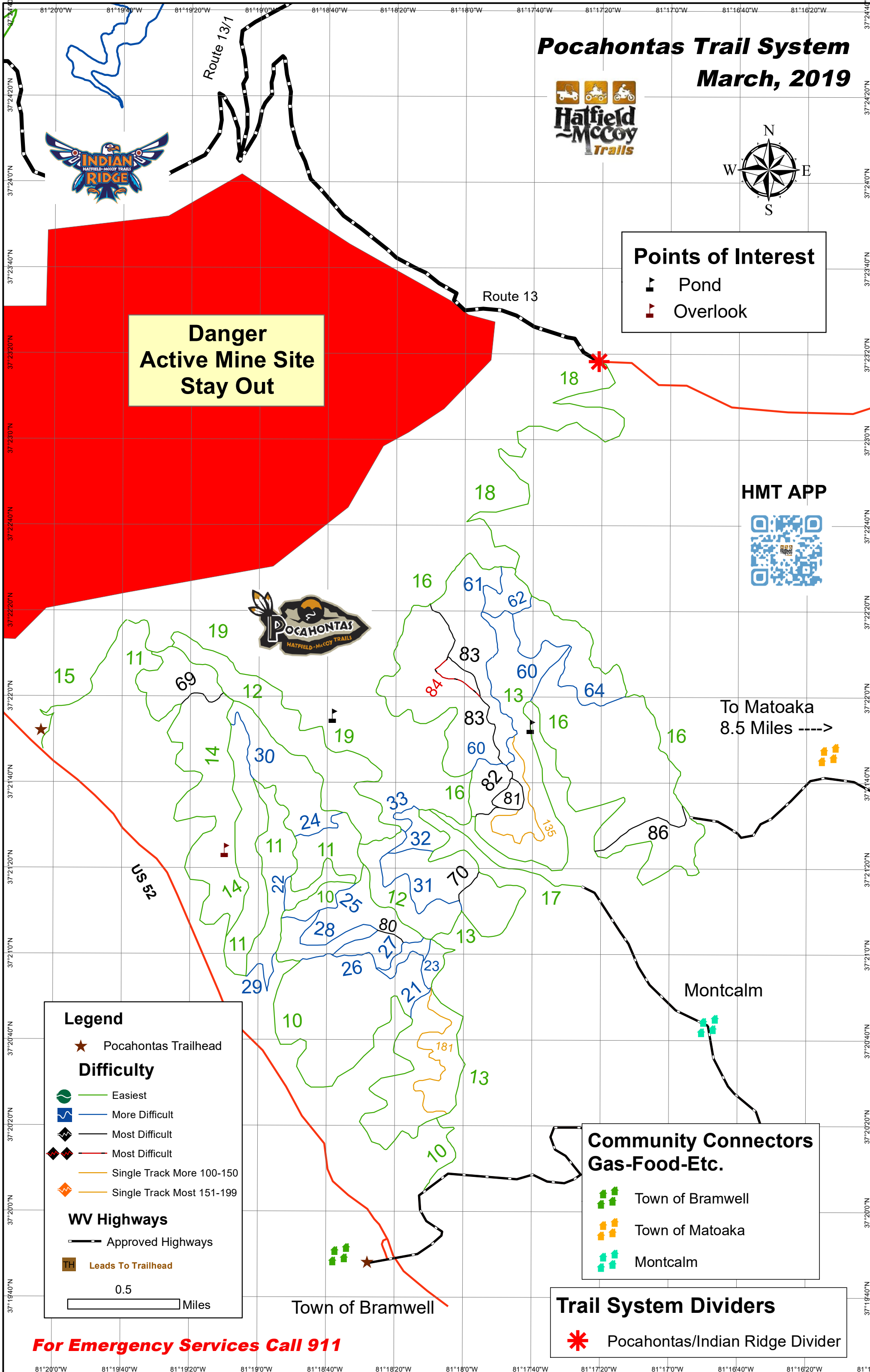
**Community Connectors
Gas-Food-Etc.**

- Town of Bramwell
- Town of Matoaka
- Montcalm

Trail System Dividers

- Pocahontas/Indian Ridge Divider

For Emergency Services Call 911





POLARIS®

can-am™



RIDER



SINCE 1971

INSURANCE



Best Western Logan Inn
2 Central Ave. Chapmanville, WV
1-866-700-7293

KEEFER'S OF LOGAN
Rt. 44 South Jerry West Hwy., Logan, WV
keeferpowersports.net
304-752-2245

Kawasaki SUZUKI POLARIS KYMCO

ROUTE 119 POWERSPORTS
Route 119, Tri-Corn Road
Danville, WV
rt119powersports.net
304-369-7171

SUZUKI POLARIS ARCTIC CAT

WEST VIRGINIA'S
KING OF POWERSPORTS

LOGAN MOTORCYCLE SALES
RT. 44 SOUTH, LOGAN, WV
(1.5 miles from intersection)
304-752-4145
www.loganmotorcyclesales.net

HONDA YAMAHA CFMOTO KTM E-TON

HATFIELD MCCOY POWERSPORTS

27241 U.S. Hwy. 119 North
Belfry, KY
hatfieldmccoypowersports.net
606-237-7311

HONDA Kawasaki POLARIS CFMOTO